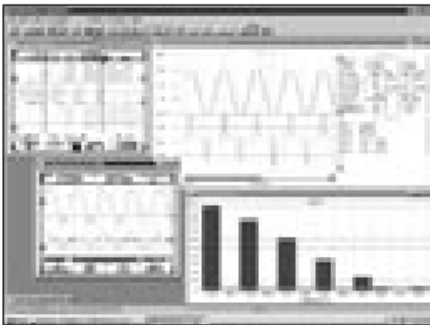


FLUKE®

ScopeMeter®

Accessories

PC Software



SW90W FlukeView® ScopeMeter® Software for Windows®

- For Fluke 190 & 120 Series ScopeMeter
- Windows® 95/98 NT 4.0/2000
- Requires one free RS-232 port (COM port)
- Optional PM9080 RS-232 Adapter/Cable required



SCC120 Software Cable Case 120 Series

SCC190 Software Cable Case 190 Series

Accessories Package, including:

- FlukeView® ScopeMeter® Software for Windows® English, French and German language
- PM9080 Optically Isolated RS-232 Adapter/Cable
- Hard Carrying Case C120 or C190

Fluke Corporation
P.O. Box 9090
Everett, WA USA 98206

Fluke Europe B.V.
P.O. Box 1186
5602 BD Eindhoven
The Netherlands

For more information call:
In the U.S.A. (800) 443-5853
or Fax (425) 446-5116
In Europe/M-East/Africa
+31 (0)40 2 675 200
or Fax +31 (0)40 2 675 222
In Canada (905) 890-7600
or Fax (905) 890-6886
From other countries
+1 (425) 446-5500
or Fax +1 (425) 446-5116

© Copyright 2001 Fluke Corporation.
All rights reserved. Printed in the
Netherlands 9/01. Data subject to
alteration without notice.

Visit us on the world wide web at:
<http://www.fluke.com>

Pub_ID: 10434-eng
Rev. 01